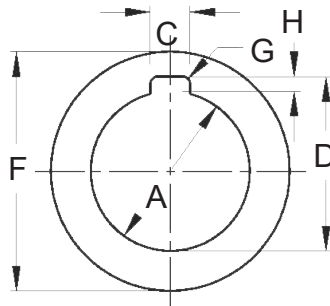


Cutting Diameter Tolerances

ARBOR TYPE CUTTERS					
Cutter Type	Specifications	Tolerance			
		Diameter	Width	Angle	Radius
Plain Milling	Up to 1" Width Over 1" – 2" Incl. Over 2"	+0.015" -0.000" +0.015" -0.000" +0.015" -0.000"	±.001" +0.010" -0.000" +0.020" -0.000"		
Side Mills	Straight Tooth Staggered Tooth Straight Tooth Saw	+0.015" -0.000" +0.015" -0.000" +0.015" -0.000"	+0.002" -0.000" ±.001" ±.001"		
Single Angle Double Angle		+0.015" -0.000" +0.015" -0.000"	+0.015" -0.000" +0.015" -0.000"	±0°10" ±0°10" on half angle	
Keyseat (1/32" oversize on diameters)	3/16" Face 1/4" Face 5/16" Face 3/8" Face and Over	±.002" ±.002" ±.002" ±.002"	-0.0002" -0.0007" -0.0003" -0.0008" -0.0004" -0.0009" -0.0005" -0.0010"		
Convex Concave Corner Rounding		+0.030" -0.000" +0.030" -0.000" +0.030" -0.000"	±.001" ±.005" ±.005"		±.001" +0.002" -0.001" +0.002" -0.001"



Cutter Bore "A" Inches	Nominal Size Key (Square) Inches	Dimensions - Inches						
		C		D		H Nominal	G Corner Radius	F Collar
		Max.	Min.	Max.	Min.			
1/2	3/32	.106	.099	.5678	.5578	3/64	.020	7/8
5/8	1/8	.137	.130	.7085	.6985	1/16	1/32	1
3/4	1/8	.137	.130	.8325	.8225	1/16	1/32	1-1/8
7/8	1/8	.137	.130	.9575	.9475	1/16	1/32	1-1/4
1	1/4	.262	.255	1.1140	1.1040	3/32	3/64	1-1/2
1-1/4	5/16	.325	.318	1.3950	1.3850	1/8	1/16	1-7/8
1-1/2	3/8	.410	.385	1.6760	1.6660	5/32	1/16	2-1/4
1-3/4	7/16	.473	.448	1.9580	1.9480	3/16	1/16	2-1/2
2	1/2	.535	.510	2.2080	2.1980	3/16	1/16	2-3/4
2-1/2	5/8	.660	.635	2.7430	2.7330	7/32	1/16	3-1/2
3	3/4	.785	.760	3.2750	3.2650	1/4	3/32	4
3-1/2	7/8	.910	.885	3.9000	3.8900	3/8	3/32	5
4	1	1.035	1.011	4.4000	4.3900	3/8	3/32	5-1/2
4-1/2	1-1/8	1.160	1.135	4.9630	4.9530	7/16	1/8	6
5	1-1/4	1.285	1.260	5.5250	5.5150	1/2	1/8	6-1/2